

SOCIAL INVESTMENT

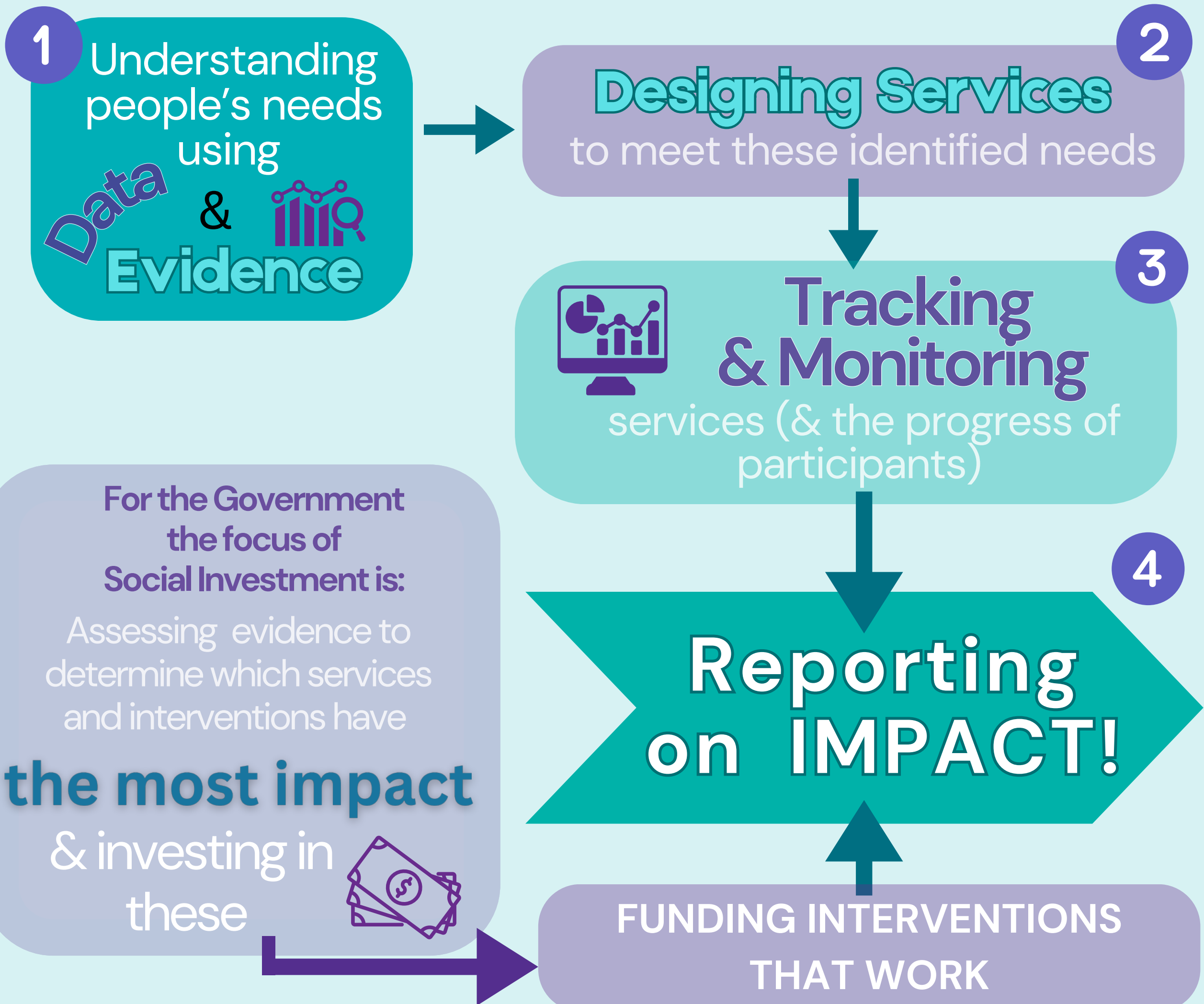
The current Government has announced its commitment to a Social Investment approach. In addition to her role as Finance Minister, Nicola Willis has also been appointed Minister for Social Investment.

What's SOCIAL INVESTMENT all about & how could it impact your organisation?



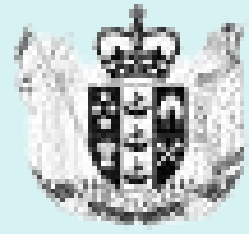
“Social Investment is about driving better outcomes from the investment government makes to deliver social services, particularly for our most vulnerable” ¹

Social Investment is....²



Footnotes & Sources:

1. Cabinet Paper - [Accelerating Social Investment](#) (May 2024, para 2)
2. More about Social Investment here: <https://sia.govt.nz/social-investment>



Social Investment Agency
Toi Hau Tāngata

The Social Investment Agency – formerly the Social Wellbeing Agency – is the new standalone central government agency tasked with leading the SI approach³

Andrew Coster (former Police Commissioner) has been appointed as the new head of SIA⁴



Social Investment is likely to impact the contracting and funding of social services

“The way we deliver & commission services is an area that will, over time, be subject to **significant change** under the social investment approach”⁵

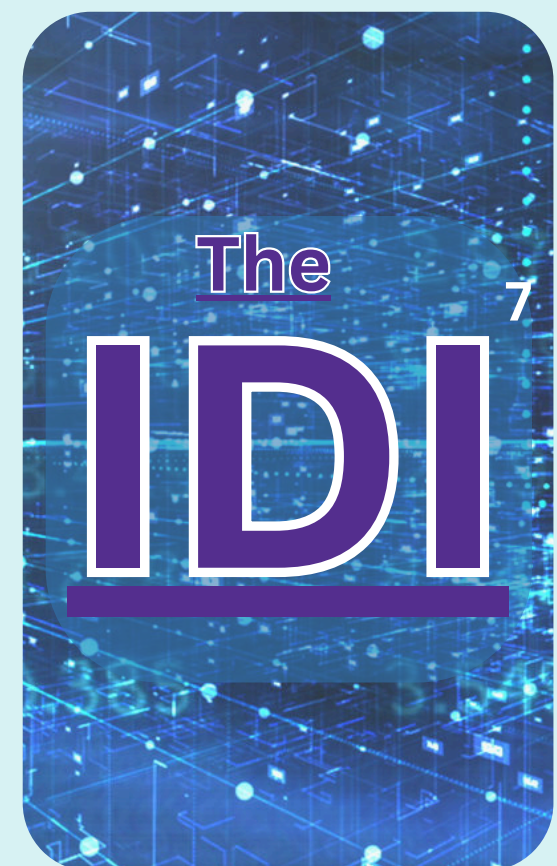


However, at the same time, the government has suggested community-level interventions are critical in the mix

“I believe that in many cases support can be provided more effectively by those closer to the problem.... Government should be **working in partnership** with communities, including iwi and NGO’s, to devolve the delivery of social services to those who know their community best.”⁶

The systematic use of data, evidence & analytics is critical to the SI approach

The Integrated Data Infrastructure is a key **TOOL** that will be used to access long-term impact of interventions and also to **IDENTIFY & TARGET** services to individuals and groups who are deemed **MOST AT RISK of poor outcomes**.⁸



Footnotes & Sources:

3. See here for more info on the Social Investment Agency: <https://sia.govt.nz/about/about-the-social-wellbeing-agency>
4. <https://www.publicservice.govt.nz/news/secretary-for-social-investment-appointed>
5. Cabinet Paper - Accelerating Social Investment (May 2024, para 48)
6. Cabinet Paper - Accelerating Social Investment (May 2024, para 49)
7. <https://www.stuff.co.nz/national/300630922/the-government-has-built-a-data-colossus--is-it-playing-with-fire>
8. See here for more info on the IDI - <https://www.stats.govt.nz/integrated-data/integrated-data-infrastructure/>

Considerations for Community Organisations

(in light of the Social Investment approach)

THE GOVERNMENT HAS SIGNALLED A CLEAR INTENTION TO FOCUS ON FUNDING FOR OUTCOMES

Do you have reliable, tools and systems in place to measure your impact?

Does your organisation have **VARIED FUNDING SOURCES** to ensure you don't have too much reliance on single sources of (government) funding?

How well can your organisation evidence the **OUTCOMES** you achieve for the people you work with / for your community?

Do you get ongoing feedback from your client groups and stakeholders about your work, that enables you to **TAILOR & EVOLVE YOUR SERVICES** to better respond to client needs?

Have you talked with other organisations about how **WORKING TOGETHER** could enable enhanced outcomes for your client/our community?

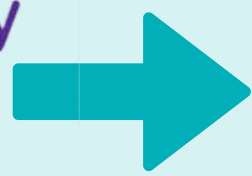
SROI?⁹

A Social Return on Investment assessment is **ONE WAY OF EVIDENCING IMPACT**.
But it's not the only way.
An SROI (showing potential financial returns of social interventions) has benefits & limitations.
Other types of impact reporting may be more cost effective & have broader, long-term benefits

Resources to Support



Community Insights



Supports groups to strengthen their data foundations & develop best practice models for measuring outcomes/impact. Talk to us about options

Provides support & training around funding options



SocialLink
Tūhono Pāpori | Western Bay of Plenty
Building a Thriving Social Sector



Supports & facilitates Collaborative Practice - MAHI TAHI - working together.

Footnotes & Sources:

9. See more information on SROI assessments here: <https://whatworks.org.nz/social-return-on-investment/>