

Te Tari Taiwhenua Department of Internal Affairs

Hāpai Hapori - Community Operations
Branch

Working with communities

Nau mai, haere mai

Welcome

Afio mai

Mālō e lava mai

‘ārikiriki

Haele Mai

Ulu tonu mai

欢迎

歡迎

こんにちは

वागत हे



New Zealand Government

Te Tari Taiwhenua | Department of Internal Affairs

Building a safe, prosperous and respected nation



Te Tari Taiwhenua
Internal Affairs

FOR PEOPLE, COMMUNITIES
AND BUSINESSES

FOR CENTRAL AND
LOCAL GOVERNMENT

WHAT'S NEW
ON THIS SITE

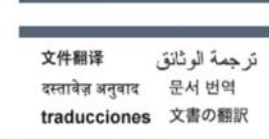
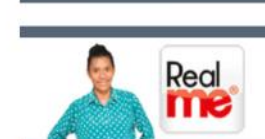
FORMS TO
DOWNLOAD

PUBLICATIONS
AND REPORTS

DATA AND
STATISTICS

ABOUT US

CONTACT US



Link to above <https://www.dia.govt.nz/For-people-and-businesses>

Link to applying to [Pokie Proceeds](#)

Hāpai Hapori Purpose

“help to build strong
sustainable communities , hapū and iwi**”**

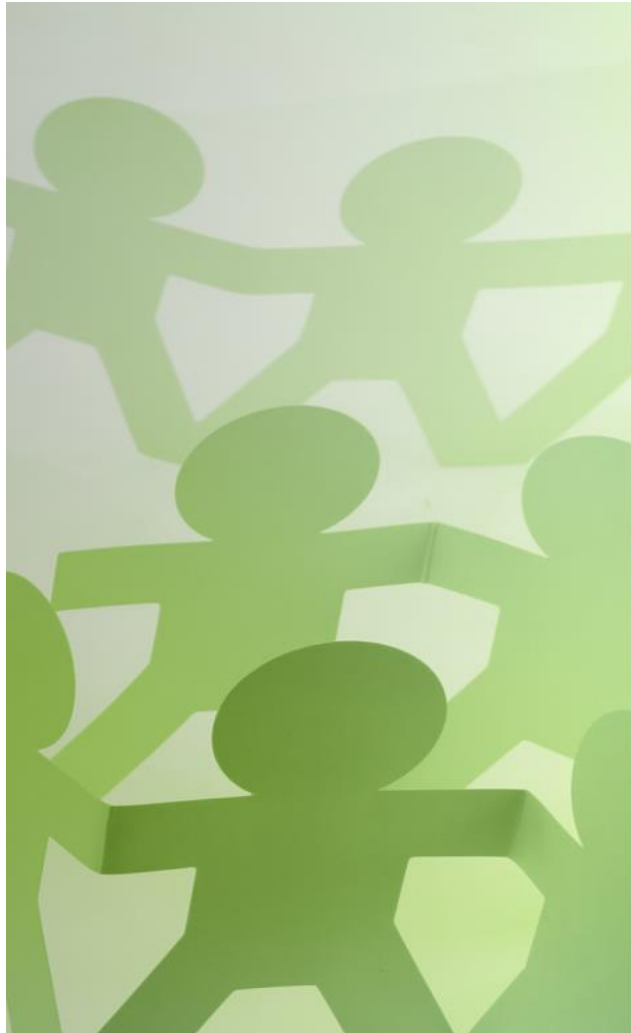


What we do

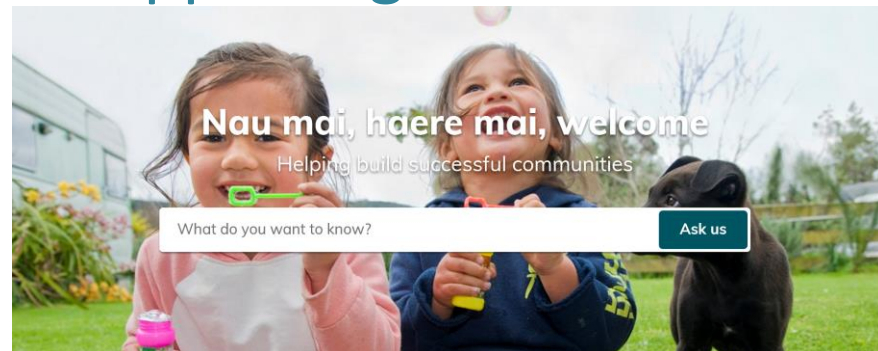
- Provide advice, information, support and resources
- Be a facilitator, relationship-broker, and connector
- Administer community funding



How we can help



- community-led development
- community projects
- developing and strengthening communities
- accessing grants
- supporting outcomes



<https://www.communitymatters.govt.nz/>



Our decision-making Committee's want to fund outcomes: the changes, benefits, effects that happen (or start to happen) as a result of the activities, projects or services.

Outcomes, outputs and inputs



Increased health and well-being of older people in the community

OUTCOME



20 elderly people visited community fair

OUTPUT

Cost of Van hire

Petrol & parking

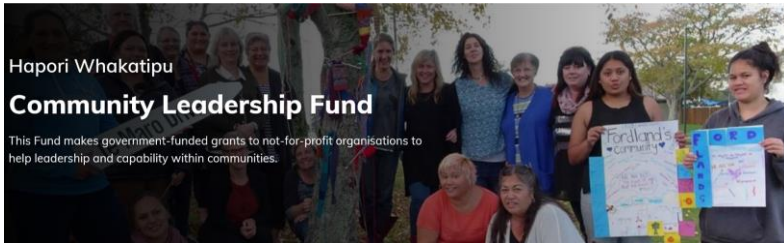
Lunch and refreshments

INPUTS

Staff costs

Entry fees

Crown funded schemes



- Community Leadership Fund
- Community Led Development Programme
- Community Internship Programme
- Support for Volunteer Fund
- Youth Work Training Scheme
- Community Organisations Grant Scheme (COGS)

Grants for Individuals

Community Matters

[Your Funders](#)

[For Communities](#)

[For Individuals](#)

[For Organisations](#)

[Log in here](#)

Kia akiaki te mana o te tangata

Our services to individuals

[Our approach to working with you](#)

[How we can help and where to find us](#)

[Log in here](#)

Overseas travel

[Winston Churchill Memorial Trust](#)

Fellowships

[Winston Churchill Memorial Trust](#)

Project grants

[Chinese Poll Tax Heritage Trust](#)

[Lottery Minister's Discretionary Fund](#)

[Peace and Disarmament Education Trust](#)

[Pacific Development and Conservation Trust](#)

Scholarships

[Peace and Disarmament Education Trust](#)

[Norman Kirk Memorial Trust](#)

Assistance for Individuals

[Lottery Individuals with Disabilities](#)

[Viet Nam Veterans and their Families Trust](#)

Some of the 20 Lottery funds...



Lottery Grants Board



FUNDS FOR YOUR
COMMUNITY

- Community
- Environment and Heritage
- Oranga Marae
- Community Facilities
- Significant Projects Fund
- Community Sector Research
- Minister's Discretionary Fund
- Individuals with Disabilities
- COVID-19 Community Wellbeing Fund – on hold



Fund Pages contain:



- Ngā Hua/Outcomes
- Ngā kaupapa matua / Priorities
- Required Documentation
- What we fund
- Organisation profile is up-to-date at the time you submit your grant request?
- Important dates
- There is more detailed information about [budgets here](#). [Lottery-community](#)

Related Articles

[What COGS grants were made in 2020?](#)

The COGS grants made by each COGS committee for 2020 are available here (currently being updated as the funding decisions are announced):

Our Process

EXPLORING THE OPPORTUNITIES

GETTING STARTED

MAKING A REQUEST

WHAT NEXT ?

USING YOUR GRANT

Logging into our Grants System

[What organisations need to request grants](#)



[Logging into the grants system](#)



**Te Tari Taiwhenua
Internal Affairs**

Nau mai, haere mai, welcome

Login with RealMe®

To access DIA's Community Advice and Grants, you need a RealMe login. If you've created a RealMe login somewhere else, you can use it here too.



Login 



[What's RealMe?](#)

Te Tari Taiwhenua Department of Internal Affairs' Grants Client Management System gives you access to make requests for funding and to report on funding you have received.

We administer funding for:

- New Zealand Lottery Grants Board
- New Zealand Government
- NZ Winston Churchill Memorial Trust
- Viet Nam Veterans and their Families Trust
- Norman Kirk Memorial Trust
- Chinese Poll Tax Heritage Trust
- Peace and Disarmament Education Trust
- Pacific Development and Conservation Trust

**FOR HELP Freephone
0800 824824**

Te Tahua Mā Ngā Whakahaere i Ngā Hapori

Community Organisation Grants Scheme (COGS)

This scheme provides government-funded grants to support voluntary and not-for-profit organisations working in local communities and neighbourhoods.

- Small fund, average grant \$3,000
- COGS provides grants to community-based social services that contribute to locally determined outcomes
- Tauranga-Moana COGS Committee Public Meeting – to be confirmed by end next week on our website and via email.

NEW Mātauranga Māori Marae Ora Fund

Mātauranga Māori Marae Ora Fund

Supporting communities to safeguard
mātauranga and taonga on marae

Open Now



Oranga Marae

The purpose of Oranga Marae is to support the physical and cultural revitalisation of marae as centres of Māori identity and mātauranga.



Marae are safe and comfortable, contributing to the well being of whānau, hapū and Iwi.



People are engaged on the Marae through activities that ensure the transmission of Mātauranga Māori



Marae increasingly contribute to the revitalisation of Te Reo and Tikanga Māori



Investment process enables whānau to work together to develop the Marae



Te Tahua Whakatinana Papakāinga Lottery Community

Grants that help improve the quality of people's lives in their communities.

The 'Bay of Plenty/Gisborne Committee' has its own regional priorities.

Can fund:

- ongoing operating costs - existing or expanded services/activities
- projects beyond an organisation's day-to-day operations
- top-up an organisation's existing funding
- minor capital works projects valued at \$30,000 or less.

Te Tahua Taiao Ngā Taonga

Lottery Environment and Heritage Committee

Lottery Environment and Heritage provides grants for plans, reports and one-off projects that will protect, conserve and promote New Zealand's natural, cultural and physical heritage.

Natural heritage:

- protect and restore habitats for native plants or animals & improve public access and information about native plants and animals.

Physical heritage:

- restore and protect places, structures or large built objects of historical significance and improve public access and information to these.

Cultural heritage:

- protect collections at risk, make collections available, improve public access and information, particularly for young people, conserve and protect moveable cultural property, such as photographs, paintings, furniture and other artefacts.

Te Tahua Hapori Ngā Whakaurunga

Lottery Community Facilities

Providing grants to improve or build new facilities for communities, and for studies to find out if a community facility is needed and can be achieved.

Facilities like community centres or buildings, stadiums, performing arts complexes, community swimming pools, skate parks, or capital works projects to improve local digital accessibility.

Be over \$30,000 total project cost.

Have 1/3 funds already secured.

Funding Dates

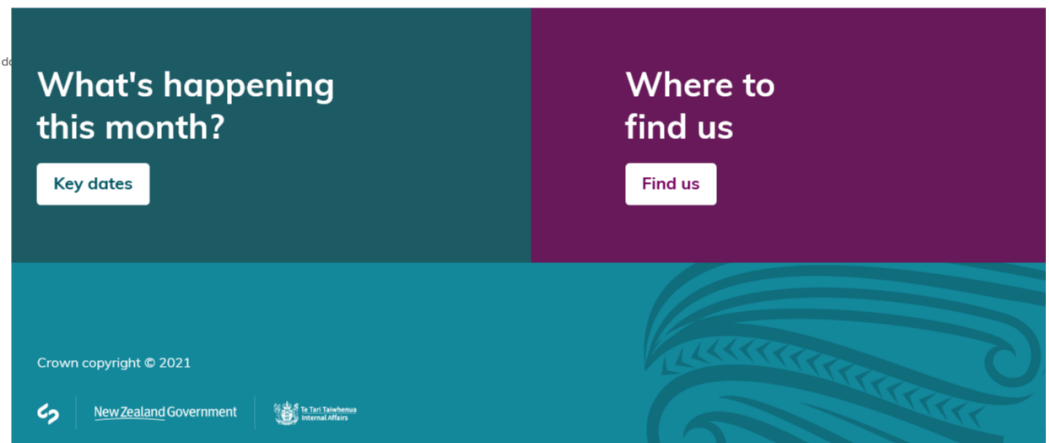
Important Funding Dates

Most of the funding administered by the Department of Internal Affairs have opening dates and closing dates for requesting funding.

The opening, closing and decision dates for all of the funds that Community Operations administers are linked below.

- Community Organisation Grants Scheme (COGS)
- Lottery Community fund
- Lottery Community Facilities fund
- Lottery Environment and Heritage fund
- Lottery Community Sector Research fund
- Lottery Health Research fund
- Lottery Outdoor Safety fund
- Lottery Significant Projects fund
- Community Leadership Fund
- Disarmament Education UN Implementation Fund
- Racing Safety Development Fund
- Support for Volunteering Fund
- Chinese Poll Tax Heritage Trust
- Peace and Disarmament Education Trust
- Pacific Development and Conservation Trust

Some grants administered by Community Operations are open for requests all year round at any time. These funds do not have opening and closing dates. These are listed below:





What's happening this month?

Key dates

Where to find us

Find us

Crown copyright © 2021

 New Zealand Government 



St Joseph's Family Centre

What does your organisation do?



Poorly Written Application	Well-written Application
<p>For over 60 years, St Joseph's has developed its position in New Zealand as a trusted organisation that offers a holistic approach to meeting the human need wherever it is required. Our mission is to preach the gospel of Jesus Christ and meet human needs in His name without discrimination. We believe in the power of community and to be community builders, not just service providers. We work with people over the long-term, helping them to find long-term solutions. We help over 10,000 people in New Zealand each year.</p>	<p>St Joseph's Family Shelter provides practical and emotional support to more than ten thousand men, women and children each year through its diverse range of services at five sites across Greater XXX. Established in 1962, St Joseph's still works in accordance with its original mission: to respond to and support those in times of need, without discrimination.</p> <p>St Joseph's network of services is backed by a committed team of staff and volunteers and includes housing and homelessness services, family services, financial counselling and emergency relief.</p>

What are the expected outcomes?



Poorly written application	Well-written application
<p>St Joseph's anticipates that the most important outcomes for this project will be vastly improved outcomes for men and women battling to recover from addiction.</p> <p>With support from our case workers, far greater numbers of former addicts will recover and move on with their lives.</p>	<p>With funding support from Funder XYZ, this project will achieve a number of positive outcomes:</p> <ul style="list-style-type: none"> • Establishment of XXX's first addiction recovery centre which offers both interim accommodation and wellbeing/health support services for up to 200 clients per year • Significantly expanded and enhanced recovery options for men and women facing the challenge of addiction in the XXX district



Contact us

 FIND US: Call the Contact Centre

Freephone: 0800 824 824 (Monday to Thursday 8:30am-5pm, Friday 9am-5pm) Email:
community.matters@dia.govt.nz

Community Advisors

Donna Morgan

- donna.morgan@dia.govt.nz

Maraea Ruri

- maraea.ruri@dia.govt.nz

Barbara Mackenzie

- barbara.mackenzie@dia.govt.nz

Caroline Matangi

- caroline.matangi@dia.govt.nz

The Department of Internal Affairs: Community Operations

1254 Fenton Street

ROTORUA